



Technical Data Sheet



Technical Data Sheet
Ref: NRPTX51500
Issued: 10/10/2025
Number of pages:4

Pattex Roof & Gutter Extreme Repair Silicone

CHARACTERISTICS

Pattex Roof & Gutter Extreme Repair Silicone is a water based, one component ready-to-use silicone sealer:

- Permanent water and weather resistant
- Applied from the cartridge using a standard hand operated sealant gun, it cures to form a film with outstanding strength and elasticity which neither peels nor cracks
- Cures to form a flexible, watertight seal for all interior and exterior repairs
- Temperature (-50°C to +150°C) and UV resistant
- Permanently flexible
- Bonds to most common building and roofing materials such as: metal, wood (treated or untreated) bitumen coating, tile, PVC, concrete without heating or bonding
- No odour
- Easy to use - water clean up (uncured)
- 5 year guarantee*

*Guarantee limited to product refund. This does not affect your statutory rights





APPLICATION FIELD

Pattex Roof & Gutter Extreme Repair Silicone is ideal for repairing small holes and cracks and for sealing joints in:

- Roof tiles
- Gutters
- Eaves
- Walls
- Skylights
- Balconies and terraces

STANDARDS

- Conforms to EN 15651-1 (CE marking) Product type F-EXT-INT: sealant for facade for interior and exterior application
- EN 15301-1 Reaction to fire: Class E

INSTRUCTIONS FOR USE

Surface preparation

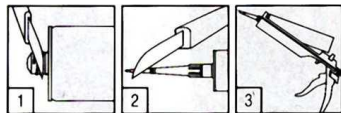
All loose materials must be removed by brushing, scraping or with high-pressure water. Treat any mould and mildew with a suitable mould remover.

Surfaces must be clean, free from oils, grease, dust and loose particles and should be dry.

For ferrous materials, it is advisable to initially apply an anti-rust paint. New concrete and mortars must be at least 28 days old.

Application

Cut off the tip of cartridge cap above the thread (1). Screw on the plastic nozzle and diagonally cut off the tip of the nozzle (2). Insert the cartridge into a cartridge gun (3).



Opening the plastic cartridge

Pull trigger to apply sealant into the joint. Ensure sealant has good contact with both sides of the joint. Smooth out sealant and remove excess immediately with water or alcohol



TECHNICAL DATA

Uncured product	
Base:	Silicone emulsion
Odour:	Neutral
Application temperature:	+5°C to +40°C (substrate and ambient)
Consistency:	Non-slump paste
Density:	~ 1.35 g/ml (ISO 2811-1)
Resistance to flow:	~ 0 mm (ISO 7390)
Skin formation time:	~ 30 minutes (23°C, 50% r.h.)
Curing speed:	~ 1,5 mm / 24 hours (23°C, 50% r.h., bead 20x10mm)
Shelf life:	18 months From date of production if stored in unopened original cartridges, in dry conditions and protected from direct sunlight at temperatures between +2°C and 30°C. See cartridge for expiry date
Coverage:	One cartridge is sufficient for approx. 11 linear meters (for 6mm bead)
Cured product	
Odour:	Odourless
Shore A hardness:	~ 20 (ISO868)
100% Modulus :	~ 0,25 N/mm ² (ISO 8339-A)
Tensile strength:	~ 0,35 N/mm ² (ISO 8339-A)
Elongation at break:	~ 400 % (ISO 8339-A)
Elastic recovery:	~ 80 % (ISO 7389-B)
Shrinkage:	~ 19 % (ISO 10563)
Movement capability	25 %
Service temperature:	-50°C to 120°C

LIMITATIONS

The product is a water based product and should not be used when temperatures < 0°C are expected in the 24 hours after application.

Product progressively develops its mechanical and adhesion properties in the weeks following its application. The best results are achieved approximately one month after application.

Cannot be painted. In case of contact with coated surfaces (especially in case of alkyd resin paints) it is recommended to test the compatibility before use.

Use clean water to smooth the surface - soapy water can affect the curing and can lead to color changes.

Do not use as a glazing sealant, on bituminous substrates or on building materials which might bleed oils, plasticizers or solvents which could attack the sealant.

Colour deviations may occur e.g. due to exposure to chemicals or high temperatures. However a change in color does usually not affect adversely the technical performance or the durability.

Not suitable for joints with water pressure or permanent water immersion



Not suitable for natural stone

No adhesion to PE, PP, PTFE(Teflon®), PMMA. In cases of unknown materials or critical applications adhesions tests.

Cleaning

Immediately remove any adhesive residue with a damp cloth. Cured material can only be removed mechanically.

Storage

Store in cool dry conditions, protected from frost.

Packaging

300ml PE cartridge

Colours

Black

HEALTH AND SAFETY

Before using the product please see related Material Safety Data Sheet that is available on request.

The information provided in this Technical Data Sheet (TDS) including the recommendations for use and application of the product are based on our knowledge and experience of the product as at the date of this TDS. The product can have a variety of different applications as well as differing application and working conditions in your environment that are beyond our control. Henkel is, therefore, not liable for the suitability of our product for the production processes and conditions in respect of which you use them, as well as the intended applications and results. We strongly recommend that you carry out your own prior trials to confirm such suitability of our product.

Any liability in respect of the information in the Technical Data Sheet or any other written or oral recommendation(s) regarding the concerned product is excluded, except if otherwise explicitly agreed and except in relation to death or personal injury caused by our negligence and any liability under any applicable mandatory product liability law.

Henkel Norden AB

Box 1155, SE-172 23

Sundbyberg

SE: Tel. +46 10 480 75 00, DK: Tlf +45 4330 1300, NO: Tlf. +47 2337 1520, FI: Puh. +358 20 122 311

Consumer service

SE: Tel. 010 480 7601, DK: Tlf. 80 88 77 05, NO: Tlf. 800 191 00, FI: Puh. 0800 165 066

Consumerservice-ac.norden@henkel.com