



Technical Data Sheet



Technical Data Sheet
Ref: NRPTX71000
Issued: 16/10/2025
Number of pages: 4

Pattex No More Nails All Materials Indoor & Outdoor



CHARACTERISTICS

- Instant Tack
- Flextec polymer based formula
- Moisture-reactive curing
- Fast curing
- Interior and exterior use
- Multiple materials
- Sensitive surfaces
- Flexible bonding
- No stringing or dripping
- Sound and vibration damping
- Porous- and non-porous surfaces
- Easy application at low temperature
- Isocyanate- free
- Solvent- free
- Gap-bridging
- Weather and aging resistant
- Adjustable
- Adheres to damp surfaces
- No shrinkage

APPLICATION FIELD

- Pattex No More Nails All Materials Indoor & Outdoor is multiple-substrate compatible including Brick, Ceramic, Concrete, Hardboard, Plasterboard, Plywood, Stone, MDF, Wood, Metal, UPVC, Glass, Plastics*, painted surfaces *, Mirrors**.

*Pre-test to determine suitable bonding, because of many different substrates. The adhesion of Pattex No More Nails All Materials Indoor & Outdoor on polystyrene foam (Styrofoam) can be significantly improved, by priming with diluted wood glue. Mix wood glue about 1 : 1 with water and spread onto the substrate. After the primer has dried, Pattex No More Nails All Materials Indoor & Outdoor can be applied.

**Use mirrors acc. EN 1036-1, ask for technical advice for large-scale objects.

- Bonds all absorbent and non-absorbent substrates. Except PE, PP, PTFE, PMMA (acrylic), plasticized PVC, copper and brass. With coated substrates, a check of product suitability or professional advice is recommended. Suitable for bonding wet surfaces if surfaces are able to dry. Not recommended for permanent water immersion/constant damp.
- Heavy or distorted items may require additional fixings



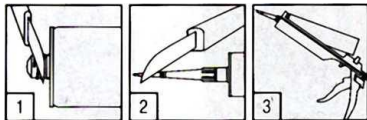
INSTRUCTIONS FOR USE

Pretreatment

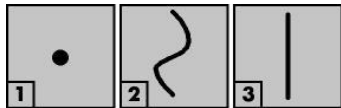
Ensure surfaces to be bonded are clean and free of dust, grease or oil. Pooled water should be removed. Substrates must be stable. Remove any contaminants likely to impair adhesion. Before application, mask off the adjacent area with foil or tape, if necessary. Check paint or coatings are firmly attached, if not remove it.

Application

Cut off tip of the cartridge above the screw thread (1). Screw on plastic nozzle and diagonally cut off the tip of the nozzle (2). Place cartridge into gun (3).



Apply adhesive onto one of the surfaces: In spots (1) in order to smooth uneven surfaces, in wave-like form (2) for higher initial tack with wide surfaces or in straight beads for smaller surfaces (3). In case of outdoor use, apply **vertical beads**.



Release gun after appliance to stop adhesive from flowing (not valid for Foldable Gun (DW111/120)).

Ensure Ventilation. (1 mm Minimum gap)

Important in case of 2 non-absorbent surfaces: Adhesive must not form continuous areas as contact with air is necessary for adhesive setting. Put the two surfaces together, correct if necessary, and press firmly. Make sure the adhesive tracks do not merge. Heavy items and items under tension have to be supported and fixed for at least 24 hrs.

Cleaning tools

Fresh adhesive may be cleaned with a cloth soaked in a solvent (alcohol or white spirit).

Once fully cured, Pattex No More Nails All Materials Indoor & Outdoor can only really be removed by mechanical means (i.e. a chisel or similar tool).



TECHNICAL DATA

Raw material	Flextec®-Polymer (moisture curing silane terminated polymer (STP))
Density	Approx. 1,6 - 1,7 g/cm ³
Heat resistance	-30°C up to +80°C, 100°C for short periods
Bond resistance	Weather, aging and moisture resistant
Open time	Approx. 15 Min
Application temperature	+5°C up to +40°C
Gap bridging capacity	Up to 20 mm
Initial tack	Approx. 14g/cm ²
Final Strength (DIN EN 205)	1,0 – 2,0 N/mm ² (lap-shear strength, Alu/Alu)
Elongation at rupture (DIN 53504)	Approx. 100%
Curing Speed	2mm/24 h (23°C/50%r.h)
Coverage on flat surfaces	250-300 g/m ²
Shrinkage	No shrinkage
Shelf life	Cartridge: 18 months From date of production if stored in unopened original cartridges, in dry conditions and protected from direct sunlight at temperatures between +5°C and 25°C



LIMITATIONS

Do not use Pattex No More Nails All Materials Indoor & Outdoor as a sealant, on bituminous substrates or on building materials, which might bleed oils, plasticizer or solvents, which could attack the product.

Not suitable for applications with water pressure or permanent water immersion/constant damp, e.g. in swimming pools below the water line, water pipes.

Will not bond to PE, PP, PTFE, PMMA (Acrylic), plasticised PVC, copper and brass

Pattex No More Nails All Materials Indoor & Outdoor can only be over-painted with water based paint (Pre-test recommended to determine suitability).

Pre-test coated substrates to ensure suitability of use

Product may only be used for mirror bonding if the mirror coating and the protective lacquer complies with EN 1036-1. In case of unknown mirror qualities and large projects, please ask mirror producer for a recommendation.

Storage

Store in cool dry conditions between +10°C and 25°C. The Product is not damaged by freezing, but avoid high temperature-changing during storage.

HEALTH AND SAFETY

Before using the product please see related Material Safety Data Sheet that is available on request.

The information provided in this Technical Data Sheet (TDS) including the recommendations for use and application of the product are based on our knowledge and experience of the product as at the date of this TDS. The product can have a variety of different applications as well as differing application and working conditions in your environment that are beyond our control. Henkel is, therefore, not liable for the suitability of our product for the production processes and conditions in respect of which you use them, as well as the intended applications and results. We strongly recommend that you carry out your own prior trials to confirm such suitability of our product.

Any liability in respect of the information in the Technical Data Sheet or any other written or oral recommendation(s) regarding the concerned product is excluded, except if otherwise explicitly agreed and except in relation to death or personal injury caused by our negligence and any liability under any applicable mandatory product liability law.

Henkel Norden AB

Box 1155, SE-172 23

Sundbyberg

SE: Tel. +46 10 480 75 00, DK: Tlf +45 4330 1300, NO: Tlf. +47 2337 1520, FI: Puh. +358 20 122 311

Consumer service

SE: Tel. 010 480 7601, DK: Tlf. 80 88 77 05, NO: Tlf. 800 191 00, FI: Puh. 0800 165 066

Consumerservice-ac.norden@henkel.com