



# Technical Data Sheet



Technical Data Sheet  
Ref: NRPTX73000  
Issued: 16/10/2025  
Number of pages: 4

## Pattex No More Nails All Materials Crystal Clear

One-part and flexible multipurpose assembly adhesive for indoor and outdoor applications based on Flextec®-Technology.



### CHARACTERISTICS

- Crystal clear appearance
- Instant Tack
- Correctable for a few minutes
- Excellent workability, no stringing
- Moisture curing
- Fast curing
- Non-slumping
- Interior and exterior use
- Multiple materials
- Sensitive materials
- Flexible bonding
- Porous and non-porous surfaces
- Easy application at low temperature
- Isocyanate-free
- Solvent-free
- Gap-bridging
- Sound and vibration damping
- Weather and aging resistant
- Works on damp surfaces
- No shrinkage

### APPLICATION FIELD

- Pattex No More Nails All Materials Crystal Clear is multiple-substrate compatible including Brick, Ceramic, Concrete, Hardboard, Plasterboard, Plywood, Stone, MDF, Wood, Metal, UPVC, Glass, Plastics\*, painted surfaces\*, Mirrors\*\*.
- All absorbent and non-absorbent substrates are suitable. Except PE, PP, PTFE, acrylic glass, plasticised PVC, copper and brass. With coated substrates, a check of product suitability or professional advice is recommended. Wet surfaces are possible if it has the possibility to dry. Not recommended for permanent water immersion.
- joints and seam seals in metallic and wooden construction
- joints in ventilation & air-conditioning ductwork



\*Pre-test to determine suitable bonding, because of many different substrates. The adhesion of Pattex No More Nails All Materials Crystal Clear on polystyrene foam (Styrofoam) can be significantly improved, by priming with diluted wood glue. Mix wood glue about 1 : 1 with water and spread onto the substrate. After drying of the primer, Pattex No More Nails All Materials Crystal Clear is ready to apply.

\*\*Use mirrors acc. DIN EN 1036-1, ask for technical advice for large-scale objects.

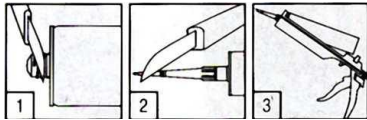
## INSTRUCTIONS FOR USE

### Pretreatment

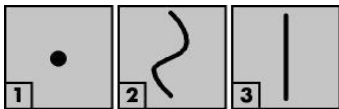
Ensure surfaces to be bonded are clean and free of dust, grease or oil. Pooled water should be removed. Substrates must be stable. Remove any contaminants likely to impair adhesion. Before application, mask off the adjacent area with foil or tape, if necessary. Check paint or coatings are firmly attached, if not remove it.

### Application

Cut off tip of the cartridge above the screw thread (1). Screw on plastic nozzle and diagonally cut off the tip of the nozzle (2). Place cartridge into gun (3).



Apply adhesive onto the surface of one of the elements to be bonded: In spots (1) in order to smooth uneven surfaces, in wave-like form (2) for higher initial tack with large surfaces or in straight strands for smaller surfaces (3). In case of outdoor use, apply **vertical** beads.



Release gun after appliance to stop adhesive from flowing (not valid for Foldable Gun (DW111/120)).

Important in case of 2 non-absorbent surfaces: Adhesive must not form continuous areas as contact with air/moisture is necessary for adhesive setting. Make sure the adhesive beads do not merge

### Cleaning tools

Fresh adhesive may be cleaned with a cloth soaked in a solvent (alcohol or white spirit).

Once fully cured, PL Premium Fixation Crystal can only really be removed by mechanical means (i.e. a chisel or similar tool).



**TECHNICAL DATA**

<b>Uncured product</b>	
Raw material	Flextec®-Polymer (moisture curing silane terminated polymer (STP))
Appearance	Crystal clear
Odour	Alcohol
Application temperature:	+5°C to +40°C (substrate and ambient)
Consistency	Non-slumping paste
Density (ISO 2811-1)	~ 1,04 g/cm <sup>3</sup>
Skin formation time (23°C, 50% r.h.)	~ 15 minutes
Open time	~ 15 minutes
Curing speed (23°C, 50% r.h., bead 20x10mm)	~ 2 mm / 24 hours
Initial tack	~ 10 g/cm <sup>2</sup>
Gap bridging capacity	Up to 20 mm
Shelf life	Cartridge 12 months From date of production if stored in unopened original cartridges, in dry conditions and protected from direct sunlight at temperatures between +5°C and 25°C
<b>Cured product</b>	
Shore A hardness (ISO868)	~ 50
Modulus 100% (DIN 53504, S2)	~ 1,0 N/mm <sup>2</sup>
Elongation at break (DIN 53504, S2)	~ 150%
Tensile strength (DIN 53504, S2)	~ 1,3 N/mm <sup>2</sup>
Final Strength (DIN EN 205)	~ 3,0 N/mm <sup>2</sup> (lap-shear strength, wood/wood)
Service temperature	-30°C up to +70°C
Coverage on flat surfaces	~ 300 g/m <sup>2</sup>
Shrinkage (ISO 10563)	~ -3 %



## LIMITATIONS

Do not use Pattex No More Nails All Materials Crystal Clear as a sealant, on bituminous substrates or on building materials, which might bleed oils, plasticizer or solvents, which could attack the product.

Not suitable for applications with water pressure or permanent water immersion/constant damp, e.g. in swimming pools below the water line, water pipes.

Will not bond to PE, PP, PTFE, PMMA (Acrylic), plasticised PVC, copper and brass.

Pre-test coated substrates to ensure suitability of use

Product may only be used for mirror bonding if the mirror coating and the protective lacquer complies with EN 1036-1. In case of unknown mirror qualities and large projects, please ask mirror producer for a recommendation.

UniBond Pattex No More Nails All Materials Crystal Clear can only be over-painted with water based paint (Pre-test recommended to determine suitability).

## Storage

Store in cool dry conditions between +10°C and 25°C. The Product is not damaged by freezing, but avoid high temperature-changing during storage.

## HEALTH AND SAFETY

Before using the product please see related Material Safety Data Sheet that is available on request.

The information provided in this Technical Data Sheet (TDS) including the recommendations for use and application of the product are based on our knowledge and experience of the product as at the date of this TDS. The product can have a variety of different applications as well as differing application and working conditions in your environment that are beyond our control. Henkel is, therefore, not liable for the suitability of our product for the production processes and conditions in respect of which you use them, as well as the intended applications and results. We strongly recommend that you carry out your own prior trials to confirm such suitability of our product.

Any liability in respect of the information in the Technical Data Sheet or any other written or oral recommendation(s) regarding the concerned product is excluded, except if otherwise explicitly agreed and except in relation to death or personal injury caused by our negligence and any liability under any applicable mandatory product liability law.

## Henkel Norden AB

Box 1155, SE-172 23

Sundbyberg

SE: Tel. +46 10 480 75 00, DK: Tlf +45 4330 1300, NO: Tlf. +47 2337 1520, FI: Puh. +358 20 122 311

## Consumer service

SE: Tel. 010 480 7601, DK: Tlf. 80 88 77 05, NO: Tlf. 800 191 00, FI: Puh. 0800 165 066

Consumerservice-ac.norden@henkel.com