



PATTEX NO MORE NAILS

PATTEX NO MORE NAILS Strong & Easy

PRODUCT DESCRIPTION

One-component, water-based construction adhesive.

CHARACTERISTICS

- Instant tack
- 140 kg/m² initial tack*
- Solvent free dispersion formula
- No need to support joints with mechanical fixings
- Fast drying on absorbent surfaces
- High adhesion strength
- Pasty consistency evens out unevenness of the substrates
- Rigid bonding
- Paintable after drying
- Suitable for polystyrene and PU rigid foam indoors
- Gap filling up to 10 mm
- Minimum application temperature +10 °C
- Low odor

* Henkel internal laboratory method

APPLICATION FIELD

- Indoor adhesive applications
- Bonding of decorative profiles made of polystyrene, PU rigid foam and mineral light granulate for interior use.
- Bonding of wood panels.
- Wall cladding made of wood, chipboard, plasterboard, PVC, Resopal and cork panels.
- Bonding of skirting boards made of wood and PVC.
- Bonding of insulation boards.
- Bonding of plaster stucco profiles.
- PATTEX NO MORE NAILS is suitable for many materials, e.g. plaster (indoor), concrete, aerated concrete, pumice stone, fiber cement, plasterboard, gypsum planks, wood-based materials (chipboard, laths, etc.), cork, rigid polystyrene/polyurethane foam, PVC, Resopal, anodized aluminum etc.
- Not recommended for permanent water immersion.



INSTRUCTION FOR USE

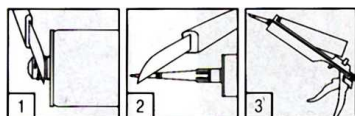
Pretreatment

Ensure surfaces to be bonded are clean and free of dust, grease or oil. One surface of the materials to be bonded must be absorbent to allow the adhesive to dry and to ensure a strong, secure bond. In the case of very water-adsorbent substrates such as gypsum, MDF, chipboard (not OSB), clay brick, it is possible that the adhesive dries too quickly along the outer edge of the application and no proper bond is formed on the inside between the substrates. To achieve a good bond on highly water-absorbent surfaces, moisten the surface with a spray bottle or wet brush before bonding. For two non-absorbent or water-sensitive surfaces use other products (e.g. SMP-/Flextec-based product). Moulded PU decor panels may have release agent residues that must be removed by sanding or with solvents (thinner, acetone).



APPLICATION

- Cut off tip of the cartridge above the screw thread (1).
- Screw on plastic nozzle and diagonally cut off the tip of the nozzle (2).
- Place cartridge into gun (Caulking Gun) (3).



- Apply adhesive onto one of the surfaces: In spots (1) in order to smooth uneven surfaces, in wave-like form (2) for higher initial tack with wide surfaces or in straight strands for smaller surfaces (3).
- In case of outdoor use, apply vertical strands.



- Release gun after application to stop adhesive from flowing.

Consumption: One cartridge is sufficient for approx. 11 linear meters (in case of a 6 mm bread). Typical applications require 200 - 400 g of adhesive per square meter.

Bonding of panels, plastic decoration details, acoustic panels etc.

Bonding of panels, plastic decoration details, acoustic panels etc.

If the workpieces are under tension or heavy, support them or staple them with decorative pins. Position the panels or boards 1-2 cm in front of the area to be bonded, push into the correct position and press on well. The workpieces can also be fixed with an adhesive tape. With smooth and firm substrates, panels and boards can be glued directly to the substrate. For larger unevenness (more than 10 mm), wooden spacers or a lath substructure should be fixed first. The wood must be dry, clean and unpainted. The width of the strips should be 5-10 cm, their thickness 5-20 mm, as required. The spacing of the strips depends on the dimensions of the boards or panels to be bonded and is 30-65 cm. The lath substructure can also be glued with PATTEX NO MORE NAILS. Ceiling substructures must be mechanically fastened.

Cleaning

Immediately remove any adhesive residue with damp cloth. Cured product is insoluble in all solvents and can only be removed mechanically (e.g. with knife).

LIMITATIONS

For outdoor applications, protect from permanent exposure to moisture and direct weathering, not suitable for floor applications. Do not apply outdoors when rain or frost is imminent. During drying the product must be protected from frost. After drying the product is frost resistant.

Do not use the product to fill/seal joints, in exterior walls, on marble/natural stones, on bituminous substrates, natural rubber, chloroprene, EPDM or on building materials which might bleed oils, plasticizers or solvents which could attack the adhesive.

Do not use on easy corroding substrates like blank steel, iron etc.

Not suitable for applications with water pressure or with permanent water immersion (underwater systems, sanitary installations, balconies and terraces...).

For further information and in case of application fields which are not mentioned in this data sheet please contact your local Henkel representative.

TECHNICAL DATA

Uncured product

Chemical base	Water-based dispersion	
Odour	characteristic	
Application temperature, °C, substrate and ambient	+10 - +40	
Density, g/cm ³	~ 1.36	ISO 2811-1
Open time, minutes	~ 30	23°C, 50% r.h.
Initial tack, g/cm ²	~ 12 - 16	
Drying time, hours	~ 24	depends on substrates and thickness

Cured product

Odour	Odorless	
Tensile shear strength, N/mm ² , (lap-shear strength, wood/wood)	~ 6-7	DIN EN 205
Tensile strength, F _{max} , N/mm ²	~ 4	DIN 53504
Service temperature, °C	-20 - +70	

GENERAL INFORMATION

Surfaces

PATTEX NO MORE NAILS is suitable for many materials, e.g. plaster (indoor), concrete, aerated concrete, pumice stone, fibre cement, plasterboard, gypsum planks, wood-based materials (chipboard, laths, etc.), cork, rigid polystyrene/polyurethane foam, PVC, Resopal, anodized aluminium etc. It is important that one surface of the materials to be bonded must be absorbent to allow the adhesive to dry.

No adhesion to PE, PP, PTFE(Teflon®). Not recommended for natural stone (e.g. marble) and bonding on tiles and ceramics.

On plastics and paints the adhesion properties should be tested before use. In cases of unknown materials or critical applications adhesion tests are recommended or contact our Technical Service.



Storage

18 months from date of production if stored in unopened original cartridges, in dry conditions and protected from direct sunlight at temperatures between +10°C and 25°C.

Chemical resistance

The product is not recommended for applications with permanent contact with chemicals.

Packaging

PE-cartridges

PE-tube

Color(s)

white

HEALTH AND SAFETY

Before using the product please see related Safety Data Sheet that is available on request.

The information provided in this Technical Data Sheet (TDS) including the recommendations for use and application of the product are based on our knowledge and experience of the product as at the date of this TDS. The product can have a variety of different applications as well as differing application and working conditions in your environment that are beyond our control. Henkel is, therefore, not liable for the suitability of our product for the production processes and conditions in respect of which you use them, as well as the intended applications and results. We strongly recommend that you carry out your own prior trials to confirm such suitability of our product.

Any liability in respect of the information in the Technical Data Sheet or any other written or oral recommendation(s) regarding the concerned product is excluded, except if otherwise explicitly agreed and except in relation to death or personal injury caused by our negligence and any liability under any applicable mandatory product liability law.

Henkel AG & Co. KGaA

Henkelstr. 67, D-40589 Düsseldorf, P.O. Box, D-40191
Düsseldorf

Phone: +49 (0) 211 / 797-0

Internet : <https://www.rubson.com/>

