



Pattex FIX Nail Power

PL50

Environment Friendly

CHARACTERISTICS

- Indoor use
- Environmental, solvent-free
- High bonding strength
- Instant tack
- Instant location



installation, fast curing.

INTRODUCTION

Pattex no-more-nails adhesive (environmentally-friendly) is a kind of non-solvent adhesive with high performance. This product has no irritating smell, intended for interior use. The initial tack is up to 100kg/m². No drilling procedure needed, avoid voice, no pollution, no need to drill hole, no damage to base material, easy

APPLICATION FIELD

- 1) Interior use for door and window frames, skirting, wall borders, stairs, pedals, gypsum board trims, shaped decorative materials and various stones.
- 2) Sticking between various wood materials and tiles, metals, concrete, stones, PVC, or formed plastics. Not suitable for

Technical Data Sheet

Issued Date: 30.6.2024



polyethylene/polypropylene plastics, PTFE.

- 3) At least one of the surfaces is required to be absorbent material.
- 4) Applicable surfaces: Gypsum surface (indoor), concrete, fibre concrete, pumice stone, paper board, gypsum floor, wood and polyurethane foam (indoor).

INSTRUCTIONS FOR USE

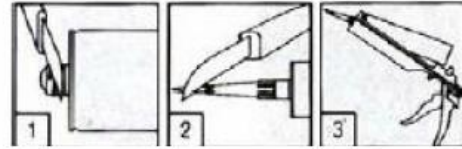
Pretreatment

- 1) For firm bonding, it must be ensured that one of the two surfaces to be bonded is absorbent material.
- 2) The surfaces must be clean, dry and free from dust, oils and grease.
- 3) The surfaces must be completely cleaned. Blocky paint and wall papers must be removed.

Application

- 1) In case of bonding small-area surfaces, apply the adhesive with a spatula.
- 2) In case of bonding large-area surfaces, cut off the tip of the cartridge, screw on the plastic nozzle and diagonally cut off the tip of the nozzle.
- 3) In case of wall application, continuous horizontal application of adhesive is impracticable because moisture accumulated at the adhesive strips will cause

damage to bonding.



Application modes

- 1) Spot-like form: to smooth uneven surfaces
- 2) Wave-like form: for higher initial tack with large surfaces
- 3) Straight strands form: for smaller surfaces
- 4) After use, release the pressure from the adhesive gun to avoid the adhesive flowing out.



Bonding

- 1) Bonding of panels, plastic trim, acoustic panels, etc.
 - a) Place a panel at a position 1-2cm away from the adhesive spot, push the panel to a proper position and then press it.
 - b) If necessary, fix the heavy materials with decorative nails.
 - c) If the surface is smooth, bond the panel directly. For uneven surfaces, we recommend to level the surfaces before bonding the panel. The surface can be treated again with small wood

Technical Data Sheet

Issued Date: 30.6.2024



inserts or hard polystyrene or polyurethane foam strips (width: 5-10cm; thickness: 5-20cm; spacing between wood inserts: 30-65cm, depend on the panel to be bonded).

2) Fixing of door frame

- a) Place the door frame and adjust the upper part of the door frame to a proper position. If the distance between the wall and the door frame exceeds 2 cm, correct the wall with materials such as the wood panel before placing the door frame so as to reduce the amount of adhesive used.

Removal of residual adhesive

Wipe away excessive adhesive with wet cloth immediately.

TECHNICAL DATA

Item	Description
Appearance	Aqueous, smooth, white paste without solvent
Density	Approx. 1.3g/ml
Open time	15 minutes under normal temperature (20°C)
Cure time	At least 48 h. The curing time is in direct proportion to the thickness
Application	>10°C

temperature	
Bonding strength	About 4.0N/mm ² (shearing strength, wood/wood at room temperature)
Volume	About 200~ 400g/m ² for trims and acoustic panels 20~40g/m ² for decorative beams and wood inserts.

The above information applies at normal ambient conditions, +23±2°C and 50±5% relative air humidity.

NOTES/LIMITATIONS

- 1) When the application ambient temperature is less than 10°C and/or the humidity more than 80%, the use effect of this product may be affected, so use of this product under those conditions is not recommended.
- 2) Do not dilute this product. Directly apply it.
- 3) Not suitable for humid or water accumulating areas.
- 4) Not suitable for installation of mirrors.
- 5) Not suitable for polyethylene and polypropylene, PTFE.
- 6) Not suitable for exterior use.
- 7) Keep out of the reach of children.
- 8) Avoid frosting and freezing.



Technical Data Sheet

Issued Date: 30.6.2024



STANDARDS

- Q/0601LCTS09
- GB 18583
- GB 33372

PACKAGING

290 ml in plastic cartridges

SHELF LIFE

18 months with completed package stored in dry and shadow places. Optimal temperature: 5 ~ 27°C.

HEALTH AND SAFETY

Before using the product, please see related Material Safety Data Sheet that is available on request.

"The information provided in this Technical Data Sheet (TDS) including the recommendations for use and application of the product are based on our knowledge and experience of the product as at the date of this TDS. The product can have a variety of different applications as well as differing application and working conditions in your environment that are beyond our control. Henkel is, therefore, not liable for the suitability of our product for the production processes and conditions in respect of which you use them, as well as the intended applications and results. We strongly recommend that you carry out your own prior trials to confirm such suitability of our product.

Any liability in respect of the information in the Technical Data Sheet or any other written or oral recommendation(s) regarding the concerned product is excluded, except if otherwise explicitly agreed and except in relation to death or personal injury caused by our negligence and any liability under any applicable mandatory product liability law."