

CX 20

COMFORT

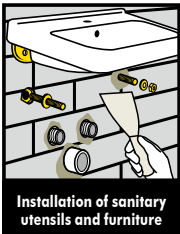
Assembly and repair mortar

Mortar for precise assembly of elements and filling up cavities, characterized by a comfortable setting time

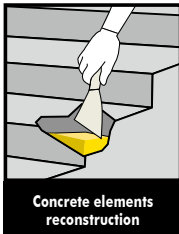


CHARACTERISTICS

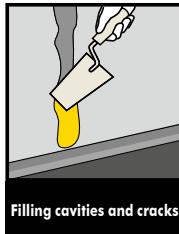
- ▶ Comfortable setting time (20 min)
- ▶ High strength after curing
- ▶ For reconstruction of concrete elements
- ▶ For filling cavities and cracks up to 50 mm
- ▶ Water and frost resistant
- ▶ Chloride free – does not cause corrosion of metal elements
- ▶ Light grey color



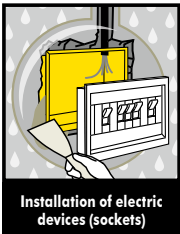
Installation of sanitary utensils and furniture



Concrete elements reconstruction



Filling cavities and cracks



Installation of electric devices (sockets)



Installation of water pipe fixings

SCOPE OF USE:

Ceresit CX 20 COMFORT mortar is characterized by a comfortable setting time (20 min), which makes it suitable for a wide range of users.

Ceresit CX 20 COMFORT is used for:

- assembly of elements made of metal, plastics, etc., e.g. anchors, hooks, connectors, hinges, elements of electrical installations (junction and outlets boxes), guide strips or corner slats, installation elements (passage pipes), embedding of installation elements and brackets, on substrates such as concrete, walls (brick, concrete blocks, cellular concrete, etc.). In the case of larger cavities or assembly of heavier components, it is necessary to temporarily stabilize them, for example, by supporting them.
- filling cavities and cracks of the size from 5 to 50 mm in walls and plasters (e.g. filling installation grooves), in ceiling and wall elements, floors and all kinds of prefabricated elements. Larger cavities should be filled with **Ceresit CX 20 COMFORT** mixed with pure sand in the ratio 1: 1.



- reconstruction of damaged concrete elements, plasters, etc., e.g. edges of stairs, corners of walls from 50 to 100 mm
Ceresit CX 20 COMFORT is water and frost resistant, therefore it can be used indoors and outdoors, on horizontal and vertical surfaces. The product is also recommended for small surface repairs of concrete elements and plasters.
Ceresit CX 20 COMFORT does not cause chloride corrosion of metal elements. When using for local sealing of concrete constructions and for damaging local water leaks, it is recommended to use **Ceresit CX 5 EXPRESS** quick setting mortar. Heavy installation and machinery should be assembled using **Ceresit CX 15 STRONG** mortar. For surface sealing of interior water tanks, it is recommended the use of **Ceresit CR 65** and **Ceresit CR 166** waterproof cementitious slurries. In the case of assembly of elements made of stone sensitive to discoloration, it is absolutely necessary to carry out their own tests to check whether the mortar will discolour the element.

SUBSTRATE PREPARATION

Ceresit CX 20 COMFORT mortar can be applied on compact, load-bearing and clean substrates free of substances that reduce adhesion, such as: fats, bitumen, dust. The substrate should be forged or drilled with a mounting hole of min. 5 mm larger than the embedded element. In the case of larger cavities, the gap should be disassembled in the so-called swallow tail. Before application, the substrate should be moistened abundantly with water. Apply the material on

matte-moist substrates. In the case of reconstruction of damaged elements, it is recommended to apply the mortar to the substrate with a hard brush and then apply the material "fresh on fresh" in one technological cycle.

APPLICATION

Pour the material into a pot with measured amount of water and mix until a homogeneous mass without lumps is obtained. The mortar should be applied with a smooth metal trowel or a spatula. When assembling the element, first fill the mortar with a properly prepared recess and then place the element to be assembled. Do not move, correct the position of the element to be assembled during mortar bonding. The addition of sand does not affect the setting time but decreases the strength of the anchorage.

PLEASE NOTE:

Work should be carried out at ambient and substrate temperatures between + 5°C and +30°C. At extreme temperatures, suitable pre-heated or chilled tap water can be used. No sooner than after 12 hours, next layers can be proceed on the **Ceresit CX 20 COMFORT**, e.g. fixing ceramic tiles. **Ceresit CX 20 COMFORT** mortar contains cement and mixed with water has an alkaline reaction. Therefore, the skin and eyes must be protected. If material comes in contact with the eyes, rinse thoroughly with water and seek medical advice. The content chromium VI – below 2 ppm during the product's validity period.

RECOMMENDATIONS

No sooner than after 12 hours, the next layers installation can be proceed on the **Ceresit CX 20 COMFORT**, e.g. fixing ceramic tiles.

STORAGE

Up to 12 months from the production date, when stored on pallets, in dry conditions and in original, undamaged packaging.

PACKAGING

20 kg, 5 kg and 2 kg bag

TECHNICAL DATA

Base:	cement combination with mineral fillers and modifiers
Bulk density:	approx. 1.41 kg / dm ³
Mixing time:	approx. 2-3 minutes
Mixing ratio:	0.4 l of water for 2 kg 1.0 l water for 5 kg 4.0 l of water for 20kg
Application temperature:	from + 5°C to + 30°C
Time of use:	approx. 20 minutes

Compressive strength:	- without the addition of sand: after 6 hours ≥ 15.0 MPa after 24 hours ≥ 17.0 MPa after 28 days ≥ 33.0 MPa - with the addition of sand: after 28 days ≥ 28.0 MPa according to PN-EN 12190: 2000
-----------------------	--

Flexural strength:	- without the addition of sand: after 6 hours ≥ 2.5 MPa after 24 hours ≥ 3.5 MPa after 28 days ≥ 4.2 MPa - with the addition of sand: after 28 days ≥ 4.0 MPa according to PN-EN 1015-11: 2001
--------------------	--

Capillary absorption, kg / m ² x h ^{0.5} :	≤ 0.5 according to PN-EN 13057: 2004
--	---

Adhesion to concrete:	≥ 1.5 MPa according to PN-EN 1542: 2000
-----------------------	--

Adhesion covered with mortar concrete shear steel:	≥ 45MPa according to PN-EN 15184: 2006
--	---

Adhesion to ribbed reinforcing bars Ø16 mm:	- in dry conditions ≥ 11 MPa - in dry not-dedusted conditions ≥ 8,5 MPa - in wet condition ≥ 10,5 MPa according to PN-EN 1881: 2007
---	--

The content of chloride ions:	≤ 0.05% according to PN-EN 1015-17: 2002 + A1: 2005
-------------------------------	--

Approximate consumption:	approx. 1.6 kg / dm ³ of filled volume
--------------------------	---

The product has:	Technical Approval ITB No. AT-15-9328 / 2014 + Annex No. 1, Certificate of Factory Production Control ITB-0609 / Z. Country DoP Nr 01034/03-01-2017
------------------	---

Apart from the information given here it is also important to observe the relevant guidelines, regulations and common standards of various organizations and trade associations. The afore mentioned characteristics are based on practical experience and applied testing. Confirmed properties and possible uses which go beyond those listed in this information sheet require our written confirmation. All data given was obtained at an ambient and material temperature of +23° C and 50 % relative air humidity unless specified otherwise. Please note that under other climatic conditions hardening can be accelerated or delayed and that the product itself is subject to local conditions such as amount of water and hardening. A product from another production site may differ.

The information contained herein, particularly recommendations for the handling and use of our products, is based on our professional experience. As materials and conditions may vary with each intended application, and thus are beyond our sphere of influence, we strongly recommend that in each case sufficient tests are conducted to check the suitability of our products for their intended use. Legal liability cannot be accepted on the basis of the contents of this data sheet or any verbal advice given, unless there is a case of willful misconduct or gross negligence on our part or unless there is a case of personal injury or death or a case of liability under the Product Liability Act. This technical data sheet supersedes all previous editions relevant to this product. Please be aware that this Technical Data Sheet only relates to a product manufactured in the specific relevant production site.

TDS No CX20 1.19

