

CL 69

»ULTRA-TIGHT WATERPROOFING AND UNCOUPLING MEMBRANE«

Alkali resistant, crack-bridging, 3-layered waterproofing and uncoupling membrane. Suitable as removable tiling & natural stone system

CHARACTERISTICS

- ▶ Waterproof / vapour-retarding
- ▶ Crack-bridging
- ▶ Waterproofing membrane for private and commercial usage
- ▶ For use on walls and floors
- ▶ For indoor and outdoor use
- ▶ No drying times,
- ▶ Rapid work progress



indoor and outdoor use



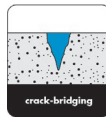
balconies & patios



humid areas



chemical resistant



crack-bridging



time saving

SCOPE OF USE

Indoors CL 69 can be used on walls and floors, outdoors only on floors.

CL 69 is used for trouble-free, flexible composite waterproofing of wall and floor surfaces under ceramic and natural stone tiles and slabs in bathrooms, showers, swimming pools and wet rooms. It is suitable for all moisture exposure classes.

Due to its uncoupling effect, CL 69 is suitable for the installation of ceramic tiles and slabs on critical substrates as well as for the removal of ceramic and natural stone coverings.

Suitable substrates:

Concrete and lightweight concrete, cement screeds, anhydrite screeds, mastic asphalt screeds, dry screeds, heated floor constructions, existing ceramic coverings, gypsum plasterboards, fibrous



CERESIT_CL69_TDS_12_2018

plasterboards, flush jointed brickwork, plaster and masonry binders, cement render, lime/cement render, gypsum plaster, rigid foam boards.

SUBSTRATE PREPARATION

The substrate must be solid, dry, clean and free of substances that may impair adhesion. Remove old paint coats. A few isolated cracks in the screed do not pose a problem as long as the crack edges are levelled and the screed is not susceptible to upward or downward deflection (e.g. lifting, warping or curling). Level off very uneven floor areas with Ceresit CN 72 / CN 90 or CN 76 floor levelling compounds. Irregularities up to 5 mm on walls can be levelled off with tile adhesive. In the case of gross irregularities, we recommend using CN 91.

CL 69 can be used on cement screeds up to a residual moisture content of 4 %. In the case of calcium sulphate flowing screeds (mechanically



Henkel AG & Co. KGaA Deutschland
Henkelstraße 67 · 40191 Düsseldorf
Internet: www.ceresit.com
E-mail: ceresit.com@henkel.com

Quality for Professionals

roughened, freed from dust and primed with CT 17 or CN 94), anhydrite screeds and gypsum-bound levelling compounds, the moisture content must be less than 0.5 weight-%. These substrates must be ground, vacuumed off and primed. In the case of gypsum plasters (P IV a/b and P V), the moisture content must be less than 1.0 weight-%. These substrates must not be felt-floated or smoothed.

APPLICATION

Composite waterproofing:

Place the CL 69 membrane on the floor and cut it to size using a cutting knife and scissors. Comb Ceresit CM 90 / CM 25 adhesive mortar onto the load-bearing and expertly prepared substrate using a notched trowel (notch size 4 mm). Place the membrane into the adhesive bed within the open time of the adhesive.

In the seam/butt area, the membrane strips must overlap by at least 5 cm. The joints must be bonded with FT 101 to ensure a waterproof seal. The sealant is applied void-free along the edge of the first membrane strip. Within the open time, the second membrane strip is placed next to it and pressed down in the overlapping area.

TIPP: To minimize layer thickness in the overlapping area, we recommend pressing this area down with the smooth side of the trowel or rolling it over with a rubber roller.

Before applying the CL 69 membrane, pipe penetrations as well as wall and floor connections (gullies etc.) should be waterproofed with the prefabricated system components CL 620 Sealing Tape, CL 621 Inner Corner, CL 622 Outer Corner, CL 623 Wall Collar and CL 625 Floor Collar. It is important to seal the connections with FT 101. Butted joints should be avoided. After installing the membrane on wall areas, ceramic tiles and slabs can be fixed directly without any waiting time or further priming coat. Use one of the following tile adhesives:

- ▶ CM 25 Glass and Glass Mosaic Adhesive
- ▶ CM 90 Easy FlexPlus

Grouting is done using a Ceresit CE 40 suitable for the joint width. Due to the impervious substrate, the drying time of the tile adhesive will double. Make sure to produce movement and connection joints in the ceramic coverings according to the acknowledged rules of technology. Afterwards, fill the joints with CS 25 Elastic Joint Sealant and FT 101.

Application as uncoupling and removable membrane:

The CL 69 membrane can be used in private indoor areas where ceramic tiles and natural stones are to be laid on critical substrates (e.g. adhesive residue, cracked and mixed substrates, parquet coverings or paint coats) or where these coverings are to be installed in a removable way.

1. The substrate must be rigid and free of deformation. Lay the CL 69 membrane strips with overlaps on the completely level floor. If necessary, prepare the substrate

2. as described above under "Substrate Preparation". Secure the laid-out strips along the edges with double-faced adhesive tape and seal the overlapping area with FT 101.
3. Afterwards, the tiles are laid as described above.
4. Produce movement joints along edges and walls and fill them with CS 25 and FT 101.
5. When removing the tiles at a later date, proceed as follows:
 - ▶ First, cut up the elastic joint filler to separate the tiles from the surface.
 - ▶ After that, chisel off the ceramic tiles and remove them.

PLEASE NOTE

Make sure to follow the applicable standards, guidelines and recommendations and to work in keeping with the generally acknowledged rules of technology. Observe the warnings-, safety- and waste advice given in the safety data sheet.

OTHER INFORMATION

Should you need support or advice, please consult our advisory service for architects and craftsmen on the

contact information you will find on **the local Ceresit website**.

Apart from the information given here it is also important to observe the relevant guidelines, regulations and common standards of various organizations and trade associations. The aforementioned characteristics are based on practical experience and applied testing. Confirmed properties and possible uses which go beyond those listed in this information sheet require our written confirmation. All data given was obtained at an ambient and material temperature of +23° C and 50 % relative air humidity unless specified otherwise. Please note that under other climatic conditions hardening can be accelerated or delayed and that the product itself is subject to local conditions such as amount of water and hardening. A product from another production site may differ.

The information contained herein, particularly recommendations for the handling and use of our products, is based on our professional experience. As materials and conditions may vary with each intended application, and thus are beyond our sphere of influence, we strongly recommend that in each case sufficient tests are conducted to check the suitability of our products for their intended use. Legal liability cannot be accepted on the basis of the contents of this data sheet or any verbal advice given,



Henkel AG & Co. KGaA Deutschland
Henkelstraße 67 · 40191 Düsseldorf
Internet: www.ceresit.com
E-mail: ceresit.com@henkel.com

Quality for Professionals

unless there is a case of willful misconduct or gross negligence on our part or unless there is a case of personal injury or death or a case of liability under the Product Liability Act.

This technical data sheet supersedes all previous editions relevant to this product. Please be aware that this Technical Data Sheet only relates to a product manufactured in the specific relevant production site.

TECHNICAL DATA

Material Base: fabric	polyethylene sheeting with backing on both sides
Colour:	Yellow
Application temperature:	+5 °C to +30 °C
Membrane thickness:	approx. 0.4 mm
Sd value:	approx. 0.4 mm
Adhesive pull strength:	> 0.30 N/mm ²
Shelf life:	24 months
Packaging unit:	30 m roll, sheet width 100 cm



Henkel AG & Co. KGaA Deutschland
Henkelstraße 67 · 40191 Düsseldorf
Internet: www.ceresit.com
E-mail: ceresit.com@henkel.com

Quality for Professionals